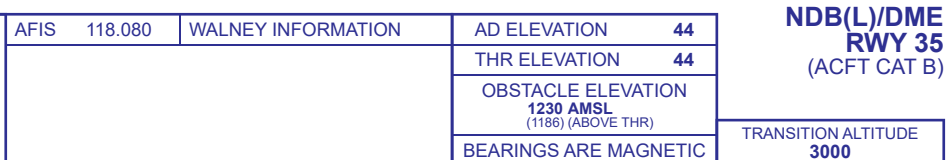


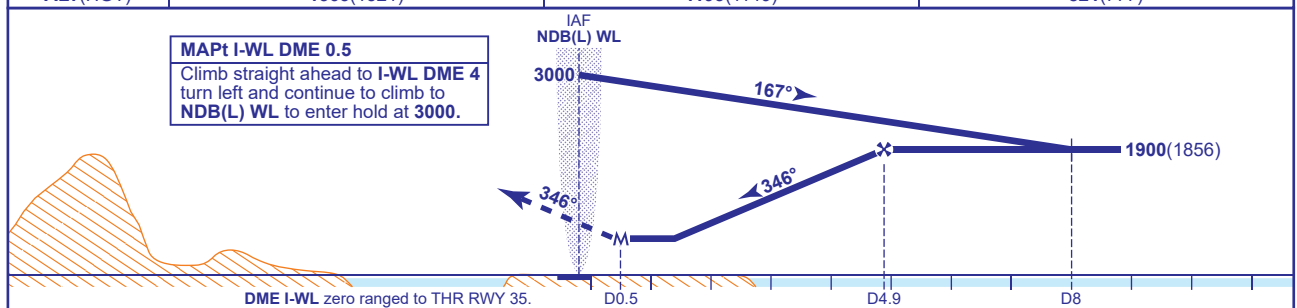
WALNEY
NDB(L)/DME
RWY 35
(ACFT CAT B)



WARNING
Pilots must ensure they are aware of the active status of D406A.
Procedure not available without DME.



MAPt I-WL DME 0.5
Climb straight ahead to **I-WL DME 4**
turn left and continue to climb to
NDB(L) WL to enter hold at **3000**.



ALTERNATIVE BASE TURN PROCEDURE AFTER HOLDING

From overhead NDB(L) WL **not below 2300** fly outbound on NDB(L) WL QDR 321° for 1 MIN, baseturn right and manoeuvre onto NDB(L) WL QDM 178° to overhead NDB(L) WL. Continue outbound on NDB(L) WL QDR 178° descending **not below 1900**. At I-WL DME 8 baseturn left to intercept extended FAT, continue as for main procedure.

ALTERNATIVE BASE TURN PROCEDURE DIRECT ENTRY

Arrive overhead NDB(L) WL **not below MSA**, only within sector entry between NDB(L) WL QDM 149° and QDM 209°. Fly outbound on NDB(L) WL QDR 178° descending **not below 1900**. At I-WL DME 8 baseturn left to intercept extended FAT, continue as for main procedure.

NOTE Use of this procedure is strictly PPR from the aerodrome operator.

CHANGE (11/25): MAG VAR. MAG TRACKS.